



Our Ref: EV.205

19 April 2012

Mr Rod Graham
Graham's Concrete Pty Ltd
1 Craig Street
KYOGLÉ NSW 2474

To: Mr Rod Graham,

RE: HISTORICAL (Non-Indigenous) CULTURAL HERITAGE ADVICE REGARDING PROPOSED CEDAR POINT/ KYOGLE QUARRY

Everick Heritage has been engaged by Greg Alderson and Associates Pty Ltd to undertake a Historical (Non-Indigenous) Cultural Heritage Assessment for the proposed Cedar Point Quarry Project. The lands subject to assessment is a 16 ha block straddling Lot 1 DP 366036 and Lot 12 DP 582916 (Attachment 1). This document details preliminary advice regarding the Historical (Non-Indigenous) Cultural Heritage constraints which will or may be encountered by the Cedar Point / Kyogle Quarry project.

The assessment was undertaken on behalf of Grahams Concrete. The purpose of this assessment is ensure compliance with the requirements for the proposal to be submitted for planning approval to the Joint Regional Planning Panel. This assessment also provides preliminary advice on potential impacts to significant historic heritage places.

The investigation was to undertaken in two phases of work, with the initial being a desktop review, involving:

- (1) a brief legislative review;
- (2) a search of published literature;
- (3) searches of applicable heritage registers; and
- (4) a review of historic aerial photography.

The subsequent assessment was a field component, whereby an On-Site Inspection was undertaken by Tim Robins from Everick Heritage on 14 March 2012.

The legislation which is directly relevant to this assessment are as follows;

- (1) The Heritage Act 1977 (NSW); and



(2) The NSW Heritage Manual;

The Heritage Act 1977 (NSW)

The Heritage Act 1977 (NSW) (Heritage Act) is aimed at identifying and protecting significant items of historic (as opposed to Aboriginal) cultural heritage. The focus of the legislation is on identifying places of either local or state heritage significance, and protecting them by registration on heritage registers. Significant historic heritage items are afforded little protection (other than at the discretion of councils) when they are not on a heritage register.

Of note are the provisions allowing for interim heritage orders (Part 3), which grants the Minister (or the Minister's delegates - which importantly may include a local government agent) the power to enter a property and provide emergency protection. This may include places that have not yet been put on a heritage register but that may be of local or State significance. The Heritage Act 1977 (NSW) also makes allowances for the protection of archaeological deposits and relics (Part 6). An archaeological 'relic' means any deposit, object or material evidence which relates to the settlement of the area, not being Aboriginal settlement. Importantly, a former requirement for an archaeological relic to be 50 years or older has recently been repealed. The focus is now on the item's potential heritage significance, not its age.

The NSW Heritage Manual

Contrary to common belief, a significant heritage item need not be particularly 'old' (the exception to the rule being the definition of an Archaeological Relic discussed above). Rather, the focus is on identifying what aspects of a particular item may be significant. The NSW Heritage Manual lists an eight step process that is generally considered a best practice guide to assessing significant items. The NSW Heritage Manual also contains a set of seven assessment criteria that act as a guide to assessing significance.

Results of Initial Stage of Assessment

The initial desktop based assessment involved searching following heritage registers;

- (a) the World Heritage List;
- (b) the National Heritage List;
- (c) the Commonwealth Heritage List;
- (d) the Register of the National Estate;
- (e) the State Heritage Register;
- (f) the State Heritage Inventory;
- (g) the Register of the National Trust of Australia; and



(h) the Kyogle Council LEP.

Results: **The World Heritage List:** Contains one place listing Kyogle LGA, The Gondwana Rainforests of Australia. The place will not be impacted by the Project.

There were no places of historical significance listed on the National Heritage, or the Commonwealth Heritage Lists. There were no places of historical significance listed on the Register of the National Estate, nor on the State Heritage Register or Inventory. The National Trust of Australia also did not have any heritage places of significance recorded that would be affected by this Project.

A search was also undertaken of the Kyogle Council LEP. One location in the vicinity of Cedar Point, a private residence located at 12845 Summerland Way, was registered within the Draft Kyogle LEP as being of possible local significance. However, this place was not present on the published LEP. Either way, the proposed quarry will not impact this location.

Search of Parish Mapping

A search was also conducting during the initial stage of Assessment of the NSW parish maps. The Proposed Quarry is situated within the Runnymede Parish, according to the NSW Parish Maps available. Between the dates of 1909 and 1935 the property was recorded as belonging to Henry Barnes and T.H & H.F. Smith. An earlier map than 1909 also exists, however it is undated. It may be a turn of the century map. It shows the same information as the later maps.

The parish mapping indicates that the basic infrastructure in this area has remained little changed since the early 1900's, particularly in regards to road location. The maps also indicate there has been relatively low impacts to the area in regards to historical heritage. The site location was most likely purchased for grazing originally, and has remained so over time.

No items of historical significance were observed from the search of the Parish mapping.

Field Inspection Results

The project area underwent a field inspection which was undertaken in conjunction with the Aboriginal On-site Consultation visit, on 14 March 2012. The project lands were surveyed for the visible presence of Historical Objects and areas of possible Historical. Photographs from the Site Inspection are included in this letter of advice.

No items of historical significance were observed during the Onsite visit.

Impact Assessment

Everick Heritage has undertaken a thorough desktop assessment, in conjunction with an onsite visit to the location of the Proposed Quarry. The proposed Quarry will not immediately impact any known or registered Historical (Non-Indigenous) Cultural Heritage sites or places.

The list of historic heritage places identified in this preliminary assessment should not be considered exhaustive. A historic heritage assessment will be a requirement of the EIS. This assessment should be commenced as soon as reasonably practical.

Conclusions and Recommendations

After undertaking two phases of Historical Assessment for the Project Lands, an in-depth desktop assessment including searches of all relevant historical registers and a field inspection of the Project Lands, Everick Heritage concludes that the Project Lands do not contain items, objects or places of Historical Cultural Heritage Significance.

Therefore there currently exist no Historical (Non-Indigenous) Cultural Heritage constraints upon the Project. No further recommendations are made at this time.

Yours faithfully,



Tim Robins
Operations Manager
Everick Heritage Consultants

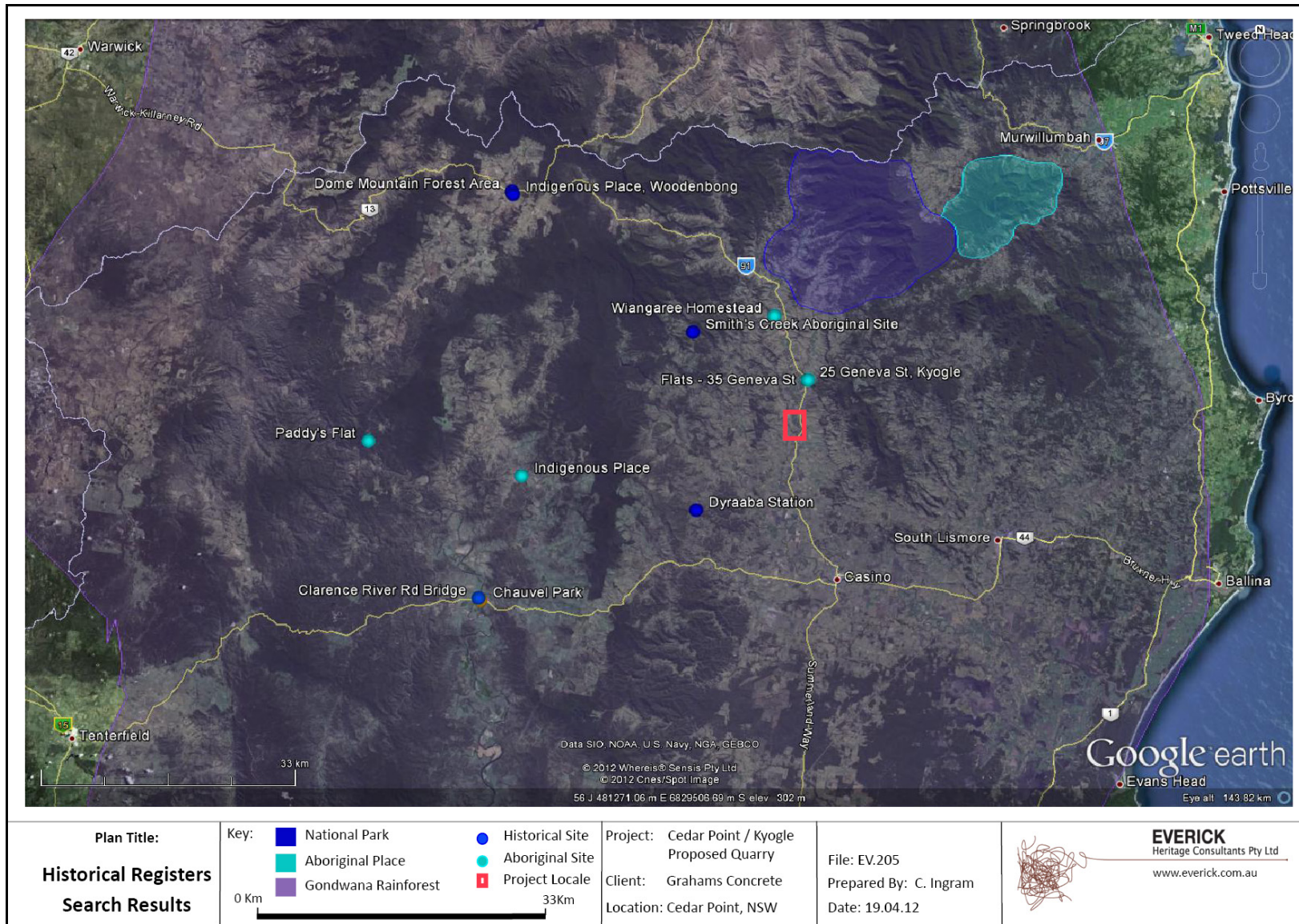


Figure 1: Historical Register Search for Cedar Point / Kyogle Region showing places of state, national or world significance.



Figure 2: View west showing escarpment face on the south east of the Project Area



Figure 3: View north-west showing eastern escarpment face



PO Box 146 RED HILL 4059
47 Arthur Terrace RED HILL 4059
t: 07 3368 2660 f: 07 3368 2440
everick@bigpond.net.au
www.everick.com.au
ABN 78 102 206 682



Figure 4: View south east along plateau top, showing southern half of the Project Area



Figure 5: View of Quarry test pit undertaken prior to preparation of the EIS



Figure 6: Stratheden Parish map of unknown date, showing approximate location of Project Area in Blue.

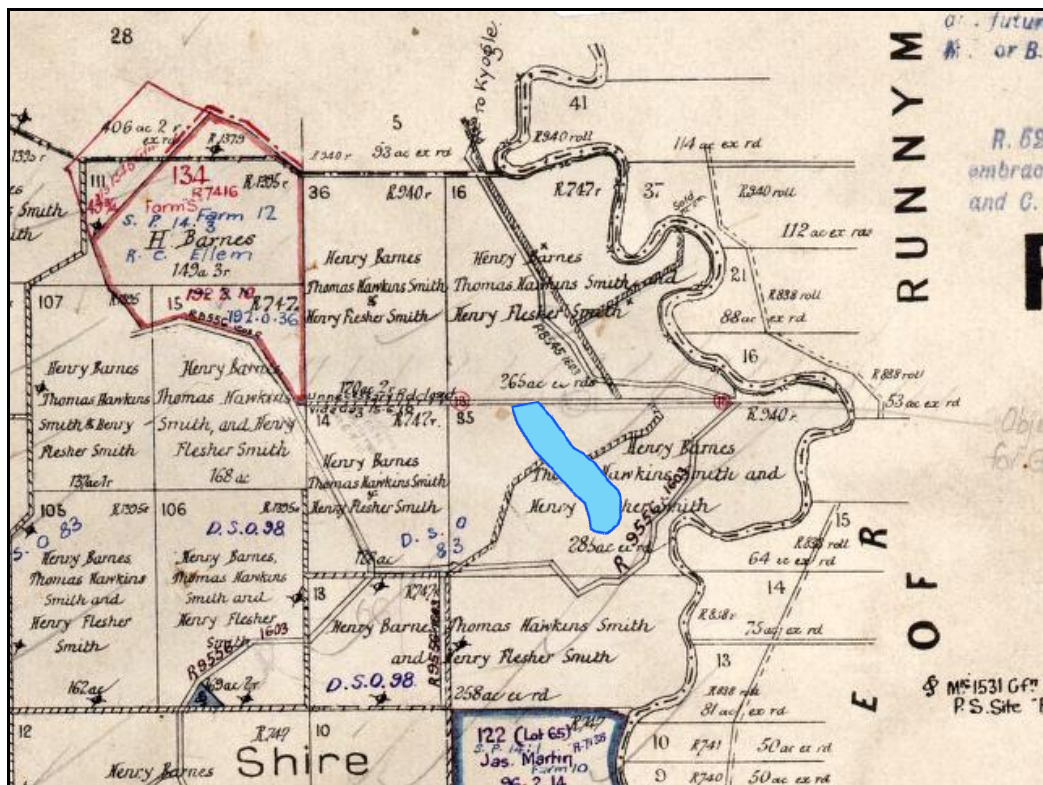


Figure 7: Stratheden Parish Map of 1909 showing approximate location of Project Area in Blue.

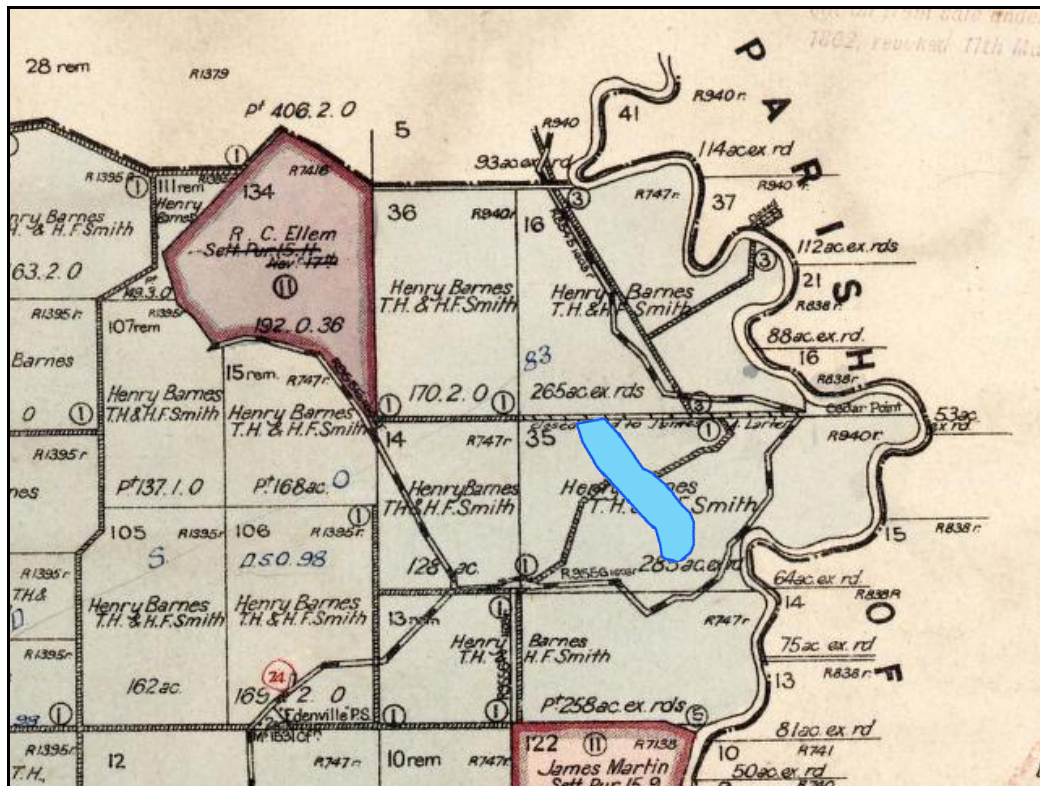


Figure 8: Stratheden Parish Map of 1922 showing approximate location of Project Area in Blue.

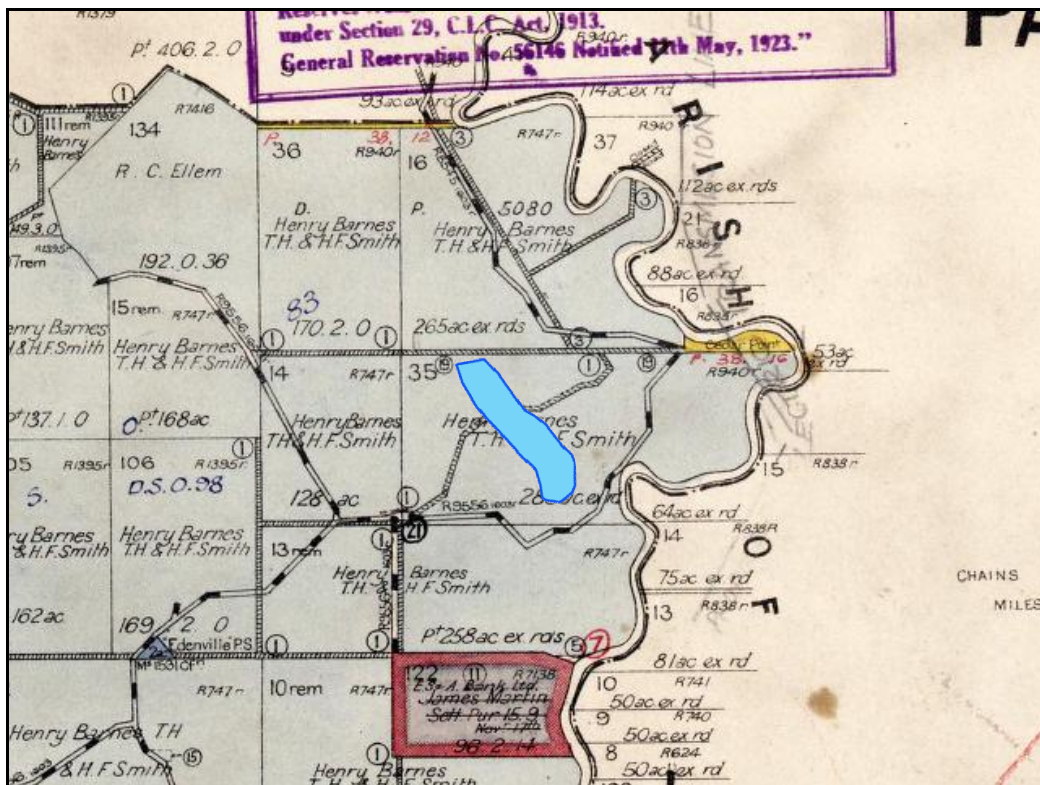


Figure 9: Stratheden Parish Map of 1935 showing approximate location of Project Area in Blue.